

Bleach Germicidal Wipes



Take control in an ever-changing healthcare environment with Ready-to-Use Bleach Cleaner Disinfectant Wipes

Proven Efficacy

- EPA-registered to kill 58 prevalent HAI-causing pathogens and outbreak-causing viruses in 3 minutes or less.¹
- *C. difficile* sporicidal efficacy tested in the presence of 3-part organic soil load to meet updated EPA testing guidance.²

Trusted by Healthcare Facilities

- Over 25 peer-reviewed articles cite bleach-based disinfection protocols as key components of infection prevention strategies.
- Meets CDC recommendations for cleaning and disinfecting surfaces in patient care areas.

Optimized for Extended Usage

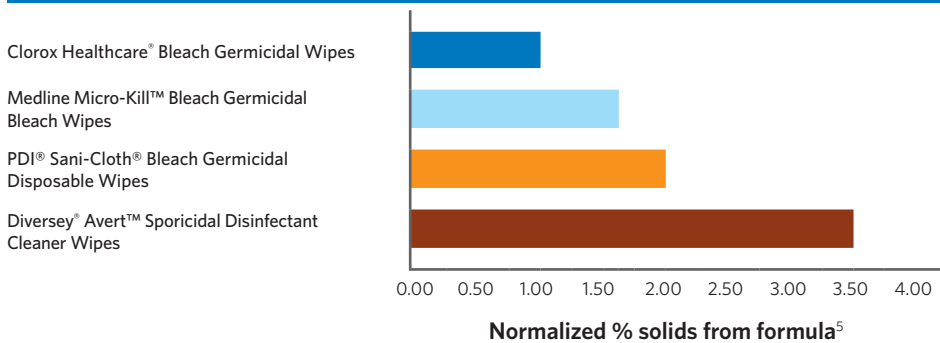
- Compatible with common healthcare surfaces including plastics and stainless steel.
- Recommended in medical equipment cleaning and care guides.³

1. Use as directed on hard, nonporous surfaces. Follow special instructions for cleaning prior to disinfection.
 2. Tested in the presence of 3-part organic soil load following EPA Guidance for the Efficacy Evaluation of Products with Sporocidal Claims Against *Clostridium difficile* (June 2014).
 3. Consult medical equipment warranty information and equipment care and cleaning guides prior to selecting and using any surface disinfectant.
 *Refer to product label for full list of disinfecting claims.

At a Glance Clorox Healthcare® Bleach Germicidal Wipes (EPA Reg. No. 67619-12)	
Active Ingredient Concentration	0.55% (5500 ppm) sodium hypochlorite (1:10 dilution of bleach)
<i>C. difficile</i> contact time	3 minutes
Kills outbreak-causing viruses? • Adenovirus type 2 • Enterovirus D68 • Influenza A and B viruses • MERS-CoV and SARS-CoV • Norovirus	Yes, in 1 minute
Kills antibiotic resistant bacteria? • MRSA, VRE, CRE*	Yes, in 30 seconds
Kills Fungi? <i>Candida albicans</i> and <i>Trichophyton mentagrophytes</i> *	Yes, in 3 minutes
Signal Word	Caution
HMIS rating	1-0-1-A
PPE Required	Follow your facility's protocols

Clorox Healthcare® Bleach Germicidal Wipes Engineered to Maximize Efficacy, Minimize Residue

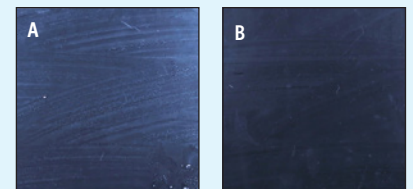
How much residue can your bleach wipe leave behind?



2/3 of healthcare disinfectant decision makers would use bleach in more places if they knew bleach residue could be easily removed.⁴

Residue can be wiped away after

- ✓ 1 wipe
- ✓ 10 wipes
- ✓ 30 wipes



Plastic tiles wiped 30 times over the course of 2 weeks with Clorox Healthcare® Bleach Germicidal Wipes (A) then polished with a damp cloth (B).

Visibly Less Residue vs. Competitor Bleach Wipes



12"x12" clear acrylic tiles wiped once with similarly-sized bleach wipes and allowed to dry.

Available in multiple wipe sizes and formats to ensure the right tool for every disinfecting job

FOR HARD SURFACES



Clinical Wipes (5"x6")

Designed for: daily disinfection, high-touch surfaces and medical equipment

Item No. 30577, 150 ct. canister, 6/case



Multi Purpose Wipes (6.75"x9")

Designed for: daily disinfection, patient room surfaces and medical equipment

Item No. 35309, 70 ct. canister, 6/case

Item No. 31424, 50 ct. carton, 6/case

Item No. 31469, 20 ct. soft pack, 24/case



Terminal Wipes (12"x12")

Designed for: discharge disinfection, large areas

Item No. 30358, 110 ct. bucket, 2/case

Item No. 30359, 110 ct. refill, 2/case



HEALTHCARE®

For more information
Call: contact your Clorox sales representative
or call 800-234-7700

Click: www.CloroxHealthcare.com.

Email: healthcare@clorox.com

© 2017 Clorox Professional Products Company,
1221 Broadway, Oakland, CA 94612.

4. Online survey of 208 healthcare disinfectant decision makers, April 2017.

5. Laboratory testing conducted to measure percentage solids in disinfectant formula.